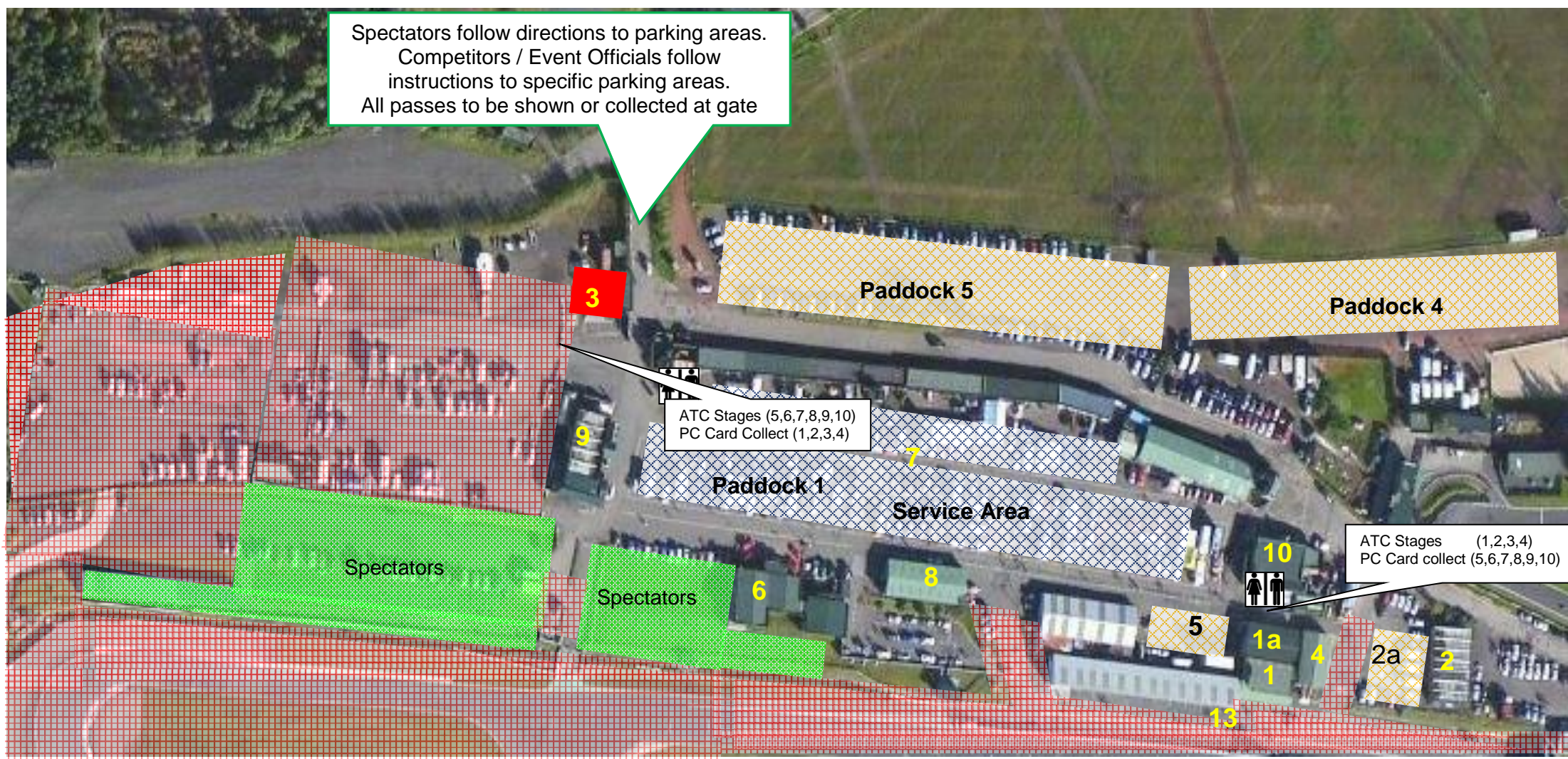


Spectators follow directions to parking areas.
 Competitors / Event Officials follow instructions to specific parking areas.
 All passes to be shown or collected at gate



- 1 Rally HQ
- 1a Competitors signing-on/documentation (Sat 2pm-6pm, Sun 7am-8.30am)
Competitors Briefing & Timecard issue Sunday 8.30am
- 2 Medical Centre
- 2a Parking for emergency vehicles only in front of Medical Centre
- 3 Refuel Zone (Please read attached guidance on refuelling)
- 4 Marshals Building (Marshals/Officials Signing On)
- 5 Event Officials parking only

- 6 Knockhill Circuit Office
- 7 Paddock 1 (Service Area - please park prettily, and keep access roads clear)
- 8 Scrutineering Bay/Noise Test (Sat 2pm-6pm, Sun 7am-8.30am)
- 9 Clubhouse cafe (open all day Sunday) and viewing area
- 10 Kinnaird's Restaurant (open Saturday 1-5pm, all day Sunday)
- 11 Paddock 5 (Spectators, officials parking)
- 12 Paddock 4 (Camping and Trailer Park)
- 13 Competitors briefing Sunday 8.30am in Pit Lane garages, in front of control

